

CAMERON COUNTY DRAINAGE DISTRICT NO. 3
 DISTRICT BOUNDARY
 (FORMERLY KNOWN AS SAN BENTO CAMERON COUNTY DRAINAGE DISTRICT NO. 3)



STATE OF TEXAS
 COUNTY OF CAMERON
 DISTRICT NO. 3
 I, the undersigned, County Clerk of Cameron County, Texas, do hereby certify that the within and foregoing map, showing the boundaries of the Cameron County Drainage District No. 3, as shown on the within and foregoing map, is a true and correct copy of the original map on file in the office of the County Clerk of Cameron County, Texas, and that the same was filed for record on the 14th day of August, 1968, at 10:30 A.M., and that the same was duly recorded in the public records of Cameron County, Texas, in Book 10, Page 10.

WITNESSED my hand and the seal of said County at Brownsville, Texas, this 14th day of August, 1968.

JOHN W. GIBSON, County Clerk



ENGINEER'S CERTIFICATE
 I, the undersigned, do hereby certify that the within and foregoing map, showing the boundaries of the Cameron County Drainage District No. 3, as shown on the within and foregoing map, is a true and correct copy of the original map on file in the office of the County Clerk of Cameron County, Texas, and that the same was filed for record on the 14th day of August, 1968, at 10:30 A.M., and that the same was duly recorded in the public records of Cameron County, Texas, in Book 10, Page 10.

WITNESSED my hand and the seal of said County at Brownsville, Texas, this 14th day of August, 1968.

JOHN W. GIBSON, County Clerk

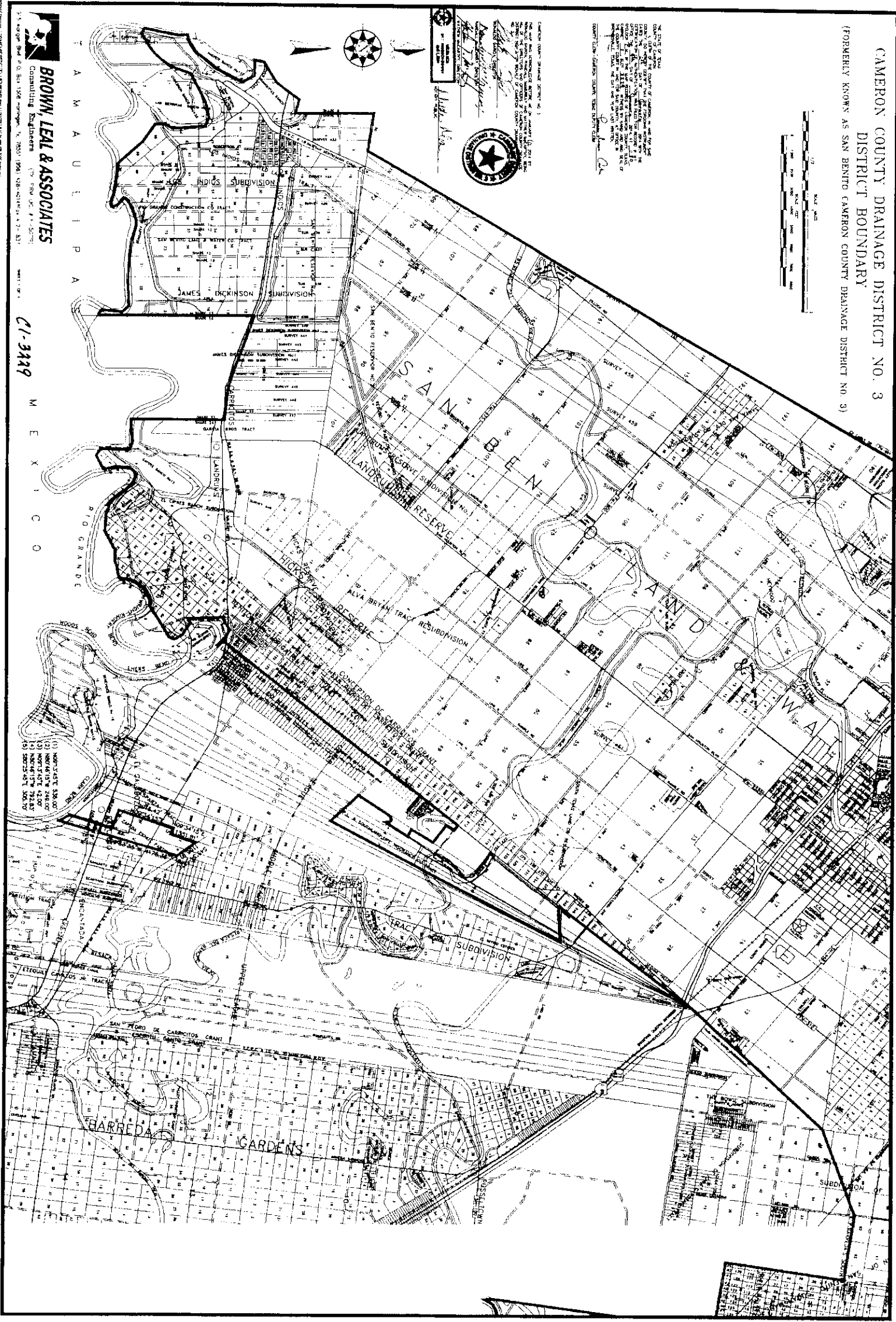


T A M A U L I P A

BROWN, LEAL & ASSOCIATES
 Consulting Engineers
 714 Orange Blvd. P.O. Box 1208 Brownsville, Texas 78801 (361) 528-6214 (4-7-83)

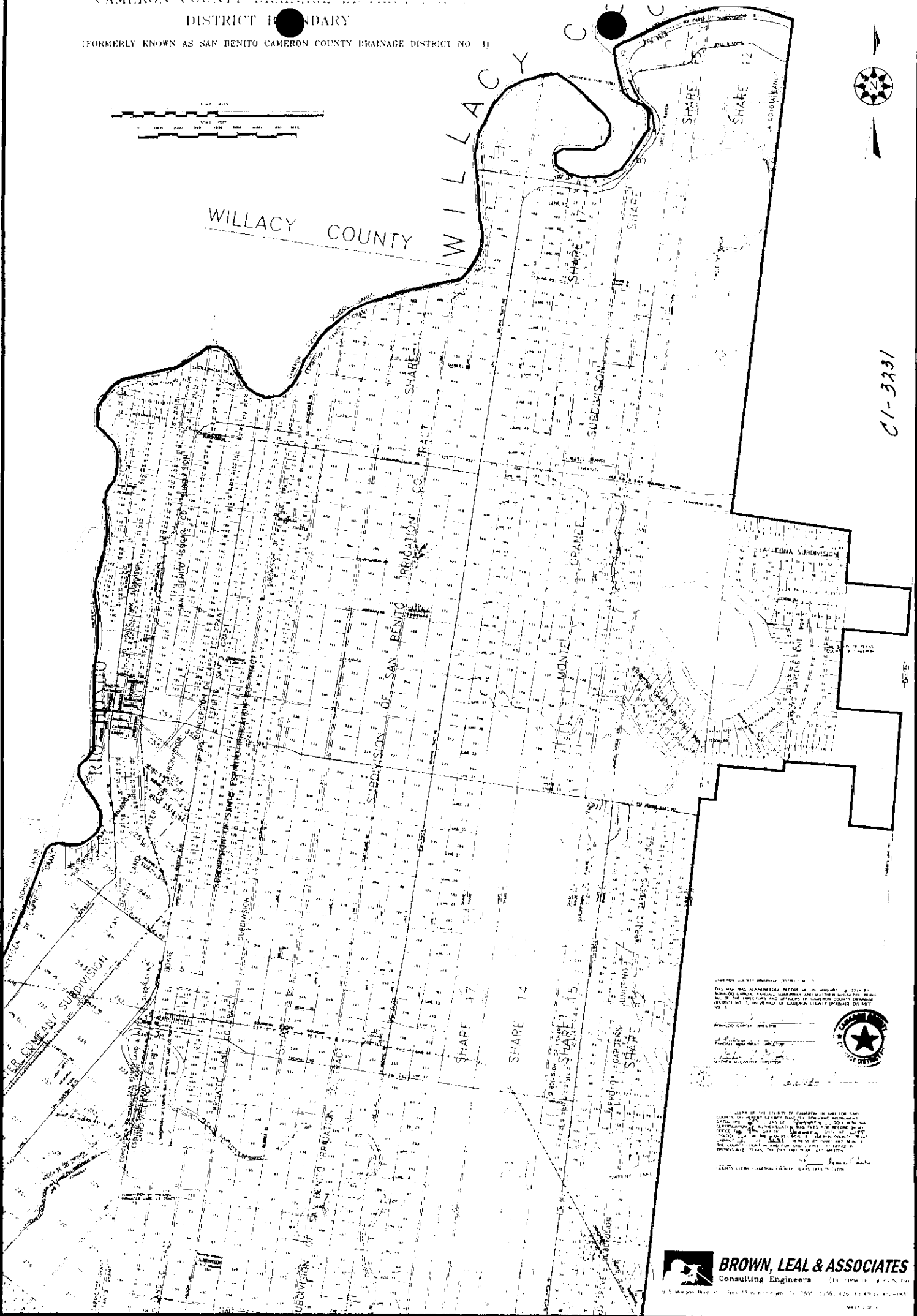
CI-3429

M E X I C O



- (1) NORTH STATE 336.00'
- (2) NORTH STATE 248.00'
- (3) NORTH STATE 42.00'
- (4) NORTH STATE 28.00'
- (5) NORTH STATE 308.00'

WILLACY COUNTY
 DISTRICT BOUNDARY
 (FORMERLY KNOWN AS SAN BENITO CAMERON COUNTY DRAINAGE DISTRICT NO. 31)



C1-3231

THIS MAP WAS APPROVED BEFORE ME ON JANUARY 2, 2012 BY
 ALVARO SALAS, JUDICIAL OFFICER AND JUDGE OF THE DISTRICT COURT
 OF THE COUNTY OF CAMERON, TEXAS, IN THE MATTER OF THE
 DISTRICT NO. 31, IN THE COUNTY OF CAMERON, TEXAS, DISTRICT
 NO. 31.

APPROVED AND AUTHORIZED:

 COUNTY CLERK, CAMERON COUNTY, TEXAS



THE STATE OF TEXAS, COUNTY OF CAMERON, IN AND FOR SAN
 BENITO COUNTY, TEXAS, I, JAMES BROWN, LEAL & ASSOCIATES,
 ENGINEERS, DO HEREBY CERTIFY THAT THE FOREGOING INSTRUMENT
 IS A TRUE AND CORRECT COPY OF THE ORIGINAL INSTRUMENT
 FILED IN THE PUBLIC RECORDS OF THE COUNTY OF CAMERON,
 TEXAS, ON JANUARY 2, 2012, AT 10:00 AM. THE INSTRUMENT
 IS CORRECTLY REPRODUCED AND THE INSTRUMENT IS
 IDENTICAL TO THE INSTRUMENT AS FILED IN THE PUBLIC
 RECORDS OF THE COUNTY OF CAMERON, TEXAS.

BROWN, LEAL & ASSOCIATES
 Consulting Engineers
 215 W. Main Street, Suite 110, Brownsville, TX 77801, (361) 832-1313, FAX (361) 832-1314

